

AUSTRALIAN OWNED &
MANUFACTURED PRODUCT.

BCA COMPLIANT

 **FOAMEX**
DIAMOND PODS®

DIAMOND PODS®

ABOUT DIAMOND PODS®

Foamex Diamond Pods are leading the way in concrete slab filling solutions, providing concrete slab support, thermal insulation, reduced effects of soil movement, whilst lowering the amount of concrete required. Designed for residential, commercial and industrial markets, Foamex are the only dedicated manufacturers of Diamond Pods in Australia. At the heart of Diamond Pod production is the Minuteman Diamond Pod Molding Machine. The machine's state of the art technology and innovative design uses no water and produces less waste thereby ensuring the Diamond Pod is environmentally friendly to produce. The unique shape of the Foamex Diamond Pod also has many benefits, not only does it have heightened strength and flexibility, it is durable, lightweight, and easy to handle.

MARKET USE

Foamex Diamond Pods have been designed for beneath concrete slab insulation and support. The Pods have many benefits; they reduce the effects of soil movement, decrease the amount of concrete required, and have thermal insular properties making them a cost effective component for any home, building or complex. The Diamond Pod's clean finish and non-irritating surface makes Foamex Diamond Pods suitable for a range of residential, commercial and industrial settings and applications.



Expanded Polystyrene (EPS) Pods, have contributed to a revolution in slab construction methods. Enabling stronger better-engineered slabs to be constructed faster and cost effectively over traditional methods.

EPS Pods are unaffected by water. They are safer as there are no trenches to cave in during construction or rainy weather. It also removes the uncertainty of completion time due to wet weather.

The inclusions of EPS Pods in a slab adds an insulation benefit of up to R1.0 (W/mK Thermal Resistance) to the slab. While making the house warmer in winter and cooler in summer, this also reduces the overall energy consumption in the house.¹

¹ Recycling Expanded Polystyrene Australia, EPS Pods, <http://www.repsa.org.au/Default.aspx?tabid=67>

DIAGRAM 1 EXAMPLE OF TYPICAL FOAMEX DIAMOND POD SLAB

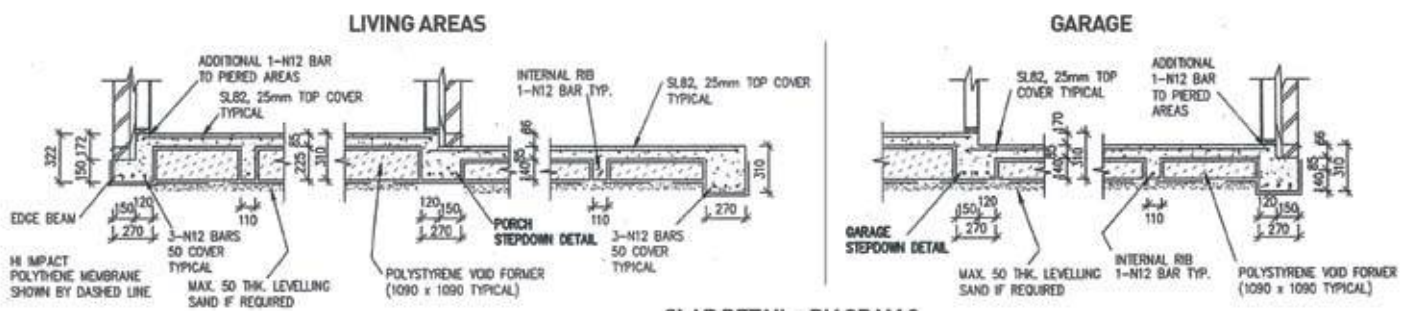
Diagrams show typical:

- Pod Detail.
- Spacer Detail.
- Reinforcement Details.
- Stepdown Details.
- Edge Beam Details.



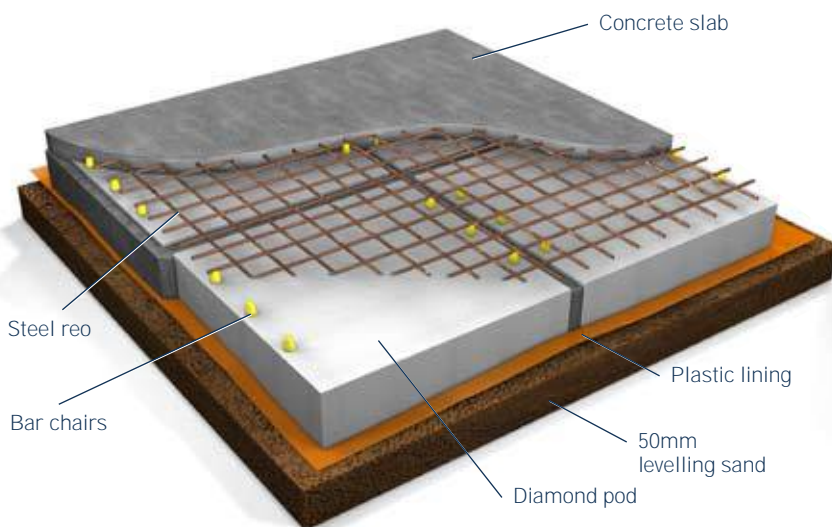
SLAB DETAIL - DIAGRAM 1

DIAGRAM 2

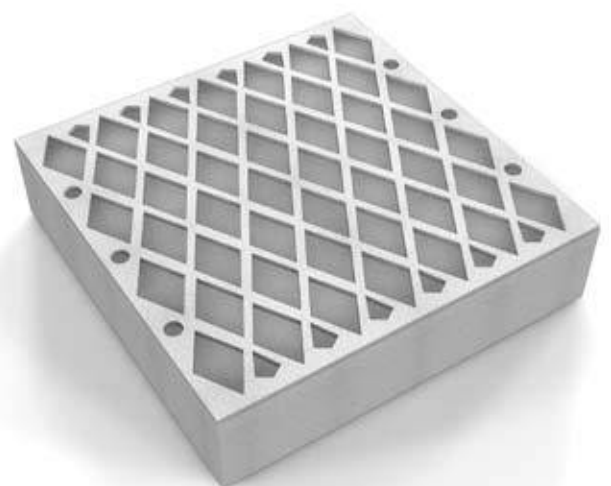


SLAB DETAIL - DIAGRAM 2

DIAGRAM 3 TYPICAL DIAMOND POD SECTION



TYPICAL DIAMOND POD SECTION - DIAGRAM 3



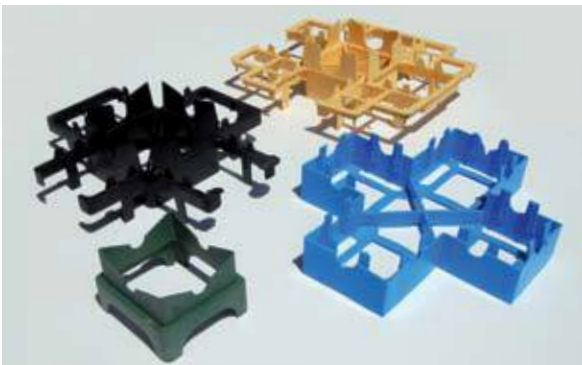
The unique Diamond Pod design

FEATURES

- Lightweight.
- Easy to handle.
- Durable.
- Strong & Flexible.
- Long Term R-VALUE (thermal values).
- Low water absorption.
- Recyclable (sustainable material).
- Comparatively inert.
- Dimensionally stable.
- Produces no ozone depleting gases.
- Does not contain CFC's or VOC's.
- Made in dedicated Pod machines.
- Complying with all relevant Australian Building Codes & Standards.

ACCESSORIES

- Edge Beam Spacer
- One/Two Way spacer
- Four Way Internal/External Spacer



Examples of internal and external spacers.

UNIQUE 4 PILLAR DESIGN

The unique shape of the Foamex Diamond Pod has many benefits.

The size and shape of the pillars of foam forming the "Diamond" shape offer optimum support for the foot traffic necessary for setting out the pods, placing the reinforcing steel and pouring the concrete.

The foam deck of the Foamex Diamond Pod is thicker than other pods and in the moulding process additional material is compacted into it.

The concreter's boot is supported by the deck which spreads the load across a minimum of four of the support pillars wherever he places his foot.

The unique design of the Foamex Diamond Pod and the unique Minuteman moulding machines make it much more suited to producing more uniform high strength pods with high recycled content.

The combinations of these features make this unique design ideal for production and for the end user.

THE ONLY TRUE NATIONAL MANUFACTURER.

Foamex is the only national manufacturer who can promise at a national level and deliver at a local level.



ENVIRONMENTAL SUSTAINABILITY

Foamex is committed to a sustainable environment.

This commitment to the environment has meant that we have the highest level of pod recycling in Australia.

The unique aspect of our business allows for Diamond Pod offcuts to be picked up from sites, which reduces the volume of waste sent to landfill. Scrap is cleared and then recycled into our Diamond Pods.

Our national levels of recycling polystyrene material exceed 650 metric tonnes per year.

Recyclability is built into our process. The sustainable process includes:



Parliament House - A.C.T



NO WATER USED.

The unique design of the Pod moulding machine ensures that all Foamex Diamond Pods use no water in their moulding.

No other design does this.

SCRAP RECYCLING.

The Diamond Pod design allows for all scrap to be picked up from sites and be recycled at a much higher percentage than alternative systems, thereby reducing the carbon footprint.

ABOUT FOAMEX

Foamex has been supplying builders, engineers, architects, designers and specifiers with quality building products since 1982. An Australian owned and operated Company, with branches across the country, Foamex is well known for it's advances in technology, product testing and dedicated staff, resulting in a superior product and service support.

For more information and technical details, please visit our website, or contact us for specific advice relating to your project's requirements.



NSW - 02 9773 1655

VIC - 03 9720 4200

SA - 08 8349 9919

QLD - 07 3390 8955

www.diamondpods.com.au

www.foamex.com.au